

TOTO

CONCEALED TANK / 自动感应隐藏式水箱 WH036D

Be sure to read through this installation manual before installation work and install the product properly according to the descriptions of this manual.

Be sure to follow the warnings and cautions for safety sake.

请务必在施工之前认真阅读该说明书，并按照说明书的内容进行正确安装。请务必遵守安全方面的警告及注意事项。

Safety Precautions (Be sure to follow them for safety sake.)

Be sure to read through this installation manual before installation work and install the product properly according to the descriptions of this manual.
Be sure to follow the warnings and cautions for safety sake.

	This indication means the case where there is a possible danger which may result in death or serious injury if the product is used improperly.		This indication means the case where there is a possible damage which may result in injury or only physical damage if the product is used improperly.
--	-------------------------------------------------------------------------------------------------------------------------------------------------------	--	--------------------------------------------------------------------------------------------------------------------------------------------------------------

Symbol example

		means the actions that must not be performed—"Prohibited"			means the actions that must be performed—"Forced"
--	--	-----------------------------------------------------------	--	--	---------------------------------------------------

WARNING

	<p>● Do not install this product in a place exposed to water splash or humid place. When using the product in the bathroom, provide a ventilating fan or ventilation hole so that air in the bathroom flows well. Install the product more than 0.6m away from the bath tub.</p> <p>● Mount the outlet for electric wiring in the manner as follows: (Otherwise, fire or electric shock may be caused.)</p> <p>a. Install a ground-fault interrupter or insulation transformer (higher than 1.5kVA, lower than 3kVA) in the outlet circuit.</p> <p>* If the wiring work as shown in a. above has not been made, ask the installer for the work.</p> <p>● Connect the ground wire to the place where it can be connected securely. (If the ground wire is not connected, electric shock may be caused in case of trouble or ground leakage.)</p> <p>Note: For grounding, use copper wire having the diameter of more than 1.5mm and grounding resistance of less than 100 ohm.</p> <p>* If the ground wire has not been connected, ask the installer for the connection.</p> <p>● Plug the electric cord firmly in the outlet (AC220V, 50Hz). (Otherwise, fire or electric shock may be caused.)</p> <p>● Be sure to connect this product to the cold water supply section. (Otherwise, burn or trouble with equipment may be caused.)</p>	<p>Ventilating fan or ventilation hole</p> <p>More than 0.6m</p> <p>Install a ground-fault interrupter or insulation transformer.</p>
--	-------------------------------------------------------------------------------------------------------------------------------------------------------------------------------------------------------------------------------------------------------------------------------------------------------------------------------------------------------------------------------------------------------------------------------------------------------------------------------------------------------------------------------------------------------------------------------------------------------------------------------------------------------------------------------------------------------------------------------------------------------------------------------------------------------------------------------------------------------------------------------------------------------------------------------------------------------------------------------------------------------------------------------------------------------------------------------------------------------------------------------------------------------------------------------------------------------------------------------------------------------------------------------------------------------------------------------------------	----------------------------------------------------------------------------------------------------------------------------------------------

WARNING

	<p>When using the product in the bathroom</p> <p>Make sure that the electric plug is waterproofed by silicon rubber.</p> <p>● If it is not waterproofed, fire or electric shock may be caused.</p> <p>* If it is not waterproofed, ask the installer for waterproof work.</p> <p>● Do not give direct impact to the product. Otherwise, the product may be broken, resulting in injury, physical damage or water leak.</p> <p>● Be sure to hold the frame when carrying the product body. If you hold other part, the product may be broken, resulting in injury, physical damage or water leak.</p>	<p>Panel</p> <p>Silicon rubber</p> <p>Power plug</p>
	<p>● Do not install the product in open air, on slanted wall or in a place exposed to thumping vibration. Otherwise, installation becomes unstable and the product may fall down to cause injury or death as the case may be.</p> <p>● Do not use other than tap water or well water (underground water) as supply water to the Washlet. (Otherwise, skin irritation, etc. may be caused.)</p> <p>● Do not use other power supply than designated (AC220V, 50Hz). (Otherwise, fire or electric shock may be caused.)</p>	

CAUTION

	<p>● Perform the installation work surely and properly according to the installation manual. (Improper installation may cause water leak.)</p>		<p>● Do not remove the water drain valve w/supply water filter while the water shutoff valve is open. (Otherwise, water may gush out.)</p> <p>● Do not bend or crush the water supply hose. (Otherwise, water leak may be caused.)</p>
--	------------------------------------------------------------------------------------------------------------------------------------------------	--	----------------------------------------------------------------------------------------------------------------------------------------------------------------------------------------------------------------------------------------

安全注意事项 (为了安全起见，请务必遵守下列事项)

请务必在施工之前认真阅读该说明书，并按照说明书的内容进行正确安装。

请务必遵守安全方面的警告及注意事项。

	警告	表示如果无视此标志而误操作时，有可能造成人员重伤或死亡。		注意	表示如果无视此标志而误操作时，有可能造成人身伤害或财产损失。
--	-----------	------------------------------	--	-----------	--------------------------------

图标举例

	此图表示绝对不能做的「禁止」内容。		此图表示必须「强制」实行的内容。
--	-------------------	--	------------------

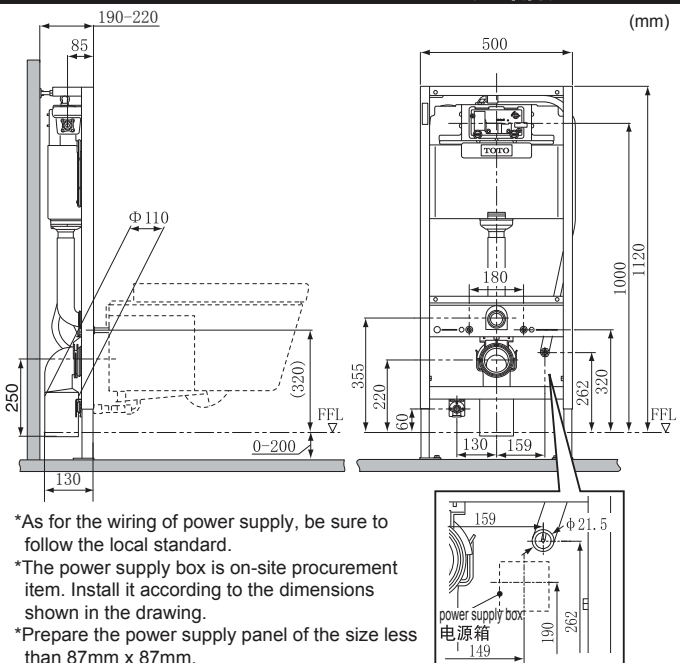
警告

	<p>● 因为本产品是电器产品，请不要安装在容易被水泼到或是湿度高的地方。在浴室内使用时，请安装换气扇或换气口使浴室保持良好的空气流通。请务必在离浴缸 0.6m 以外安装本产品。</p> <p>● 请按如下要求设置电源配线用插座。(否则可能会导致火灾或触电。)</p> <p>a. 请在插座的电路上安装漏电开关或用绝缘变压器 (1.5kVA 以上, 3kVA 以下) 进行保护。</p> <p>※若未做上记 a. 项的配线施工时，请务必委托承包该施工的电工商</p> <p>● 请确实进行接地线的接地处理，务必接至地线上。</p> <p>(若未正确地进行接地工程，发生故障或漏电时可能会导致触电)</p> <p>注：作为接地线请务必使用接地电阻为 100Ω 以下，直径为 1.5mm 以上的铜线。</p> <p>※若未进行接地处理时，请务必委托承包该施工的电工商。</p> <p>● 请务必将电源插头确实地插入插座 (交流 220V、50Hz) 中。(否则可能会导致火灾或触电。)</p> <p>● 请务必将本产品连接至冷水供给部分。(否则可能会导致烫伤或机器故障)</p> <p>在浴室内使用之场合</p> <p>请确认电源插头已使用硅胶进行了防水处理。</p> <p>● 如未进行防水处理，可能会导致火灾或触电。</p> <p>※若未进行防水处理时，请务必委托承包该施工的电工商。</p> <p>● 请勿直接让产品受冲击。否则产品破损而可能会导致受伤、物品损坏或漏水。</p> <p>● 搬运产品本身时，请务必手持框架。若手持其他部位而搬运的话，因产品破损而可能会导致受伤或物品损失和漏水。</p>	<p>换气扇或换气口</p> <p>0.6m 以上</p> <p>应安装漏电开关或用绝缘变压器。</p>
	<p>禁止</p> <p>● 请勿安装在室外以及有斜坡的壁面或振动激烈的场所。否则会造成安装不稳定而可能脱离掉落，导致受伤，甚至于人员死亡。</p> <p>● 往卫浴供水时，请勿使用除自来水或可供饮用的井水 (地下水) 以外的其他水源。(否则可能会导致皮肤发炎等。)</p> <p>● 请勿使用指定电源 (交流 220V、50Hz) 以外的电源。(否则可能会引导致火灾或触电。)</p>	

注意

	<p>● 施工时，请严格按照施工说明书来正确地进行。(如未正确安装，可能会导致漏水。)</p>		<p>禁止</p> <p>● 请勿在打开止水栓的状态下拆下水滤网排水栓。(否则，水会喷出。)</p> <p>● 请勿折弯或压坏给水软管。(否则可能会导致漏水。)</p>
--	-------------------------------------------------	--	---------------------------------------------------------------------------------------------

Product Dimensions / 产品尺寸



*As for the wiring of power supply, be sure to follow the local standard.

*The power supply box is on-site procurement item. Install it according to the dimensions shown in the drawing.

*Prepare the power supply panel of the size less than 87mm x 87mm.

*Install the power supply so that it can be taken out in the position of designated dimensions. (AC220V, 50Hz)

*▽FFL finish denotes the floor surface.

*Fixation of the toilet bowl is not described in this installation manual.

※应根据当地的规定而进行电源的配线处理。

※电源箱为现场筹备品。应按设计图所示的原样尺寸进行安装。

※请准备尺寸为 87mm x 87mm 以下的电源控制面板。

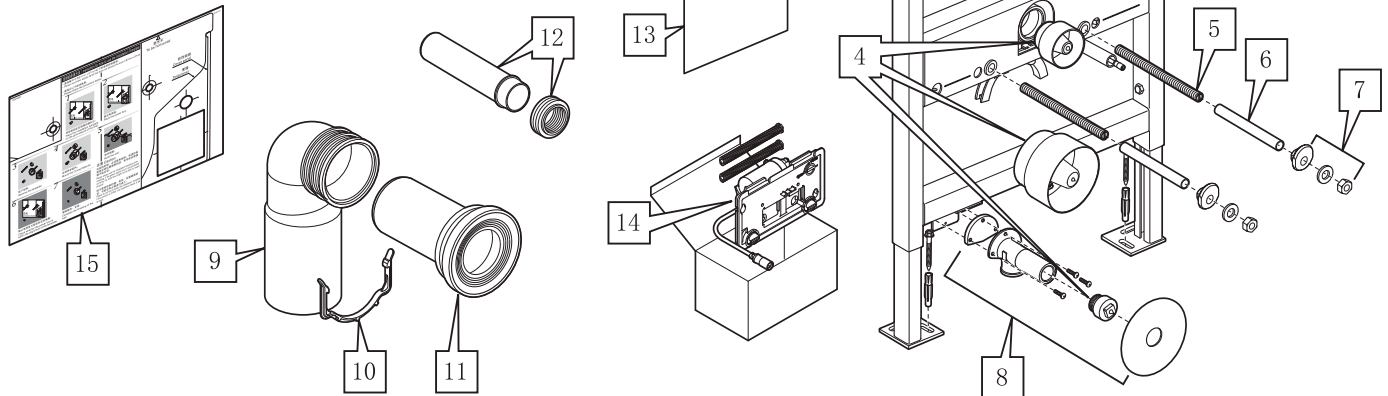
※请设置电源，能使电源插头确实地插入具有规定尺寸的位置。(AC220V 50Hz)

※▽FFL 是指完成地坪面。

※本施工说明书内未记载有关便器固定方面的说明内容。

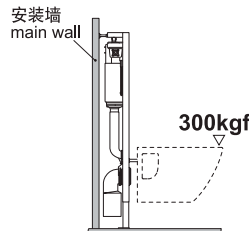
Names of Parts / 各部位名称

No.	NAME 名称	QTY 个数
1	Setscrew and anchor / 固定螺栓·地脚螺栓	4
2	Panel curing cover / 控制面板保护罩	1
3	Setscrew / 固定螺栓	2
4	Plug / 堵头	1
5	Set bolt for toilet bowl / 便器固定螺栓	2
6	Bolt cover / 便器固定螺栓保护套	2
7	Spacer, washer and nut / 衬套·衬片·螺母	2
8	Washlet water supply metal / 卫洗丽用水配件	1
9	Water drain elbow (PVC) / 排水弯管 (PVC)	1
10	Clamp / 管夹	1
11	Water drain pipe and gasket / 排水管·密封材料	1
12	Water supply pipe and gasket / 给水管·密封材料	1
13	Water supply and drain pipe cutting manual / 给排水管的切断作业指导书	1
14	Toilet bowl flushing motor / 便器洗净马达	1
15	Installation template / 型纸	1
16	Wall fixing metal / 壁固定配件	2



Cautions / 注意事项

- Install this product prior to tiling.
- Please confirm the wall is the main wall, the thickness exceed 80mm and it can bear more than 300kgf strength when the strength act on the front of toilet bowl.
- Proceed to the installation work when all of the toilet bowl water drain port, water supply and Washlet water supply works have been completed.
- Supply the power to the product when all the installation work has been completed.
- Use the product at the water supply pressure within the range of 0.1MPa to 1.0MPa
- Connect the product to the tap water. Do not use circulation water and water full of foreign matters.
- Eliminate all foreign matters in the water pipe prior to connecting the water supply hose of the tank.
- As for the installation procedure of NEOREST (toilet bowl), refer to the installation manual for NEOREST
- As for the installation method of the flush panel (panel) for flush operation, refer to the installation manual for flush panel.
- The power supply is of AC220V(50Hz) and the maximum power consumption is 400 to 470W. Be sure to confirm that the wiring work is made appropriately for this power. (Exclusive wiring is recommended.)
- The water supply temperature is 0 to 35°C. Be sure to use the product within this temperature range.
- The outlet panel is on-site procurement item. Use the one having the size less than 87mm x 87mm.
- The power supply box is on-site procurement item.
- 铺瓷砖之前, 请务必安装本产品。
- 在安装支架前, 请确认所安装墙壁是承重墙, 墙壁厚度在80mm以上, 且当300kgf以上的力施加于完工后的马桶前端时, 墙壁应能承受这股拉力。
- 便器的排水口、给水管路以及卫洗丽的给水等的所有工作结束后, 才可允许进行安装工作。
- 所有安装工作结束后, 才可允许往产品通电。
- 给水压力请务必在0.1Mpa ~ 1.0Mpa的范围内使用。
- 连接到自来水管。请勿使用循环水或含杂质较多的水。
- 与水箱的给水软管连接之前, 请务必排除自来水管内的所有异物。
- 关于NEOREST(便器)的施工方法, 请参照NEOREST专用的施工说明书。
- 关于洗净操作面板板的施工方法, 请参照操作面板专用的施工说明书。
- 电源为交流220V (50Hz), 最大耗电量为400 ~ 470W。请确认是否按该电力要求进行配线处理。(建议使用专用配线。)
- 给水温度为0 ~ 35℃。请在该范围内使用。
- 插座面板为现场筹备品。请使用尺寸为87×87mm以下的插座面板。
- 电源箱为现场筹备品。



Note: Do not block the water drain port with wastes such as cement, putty, etc. To avoid injury to the installer or breakage of the product, it is necessary to carry out the installation work by a team of more than 2 persons. When the installation is over, perform trial run for each part and check for any water leak.

注意: 请勿用水泥、油灰或垃圾等堵塞排水口。为了避免让施工人员受伤或损坏产品, 请务必以二人一组的方式进行施工。安装结束后, 对各部件进行试运转, 以检查有无漏水。

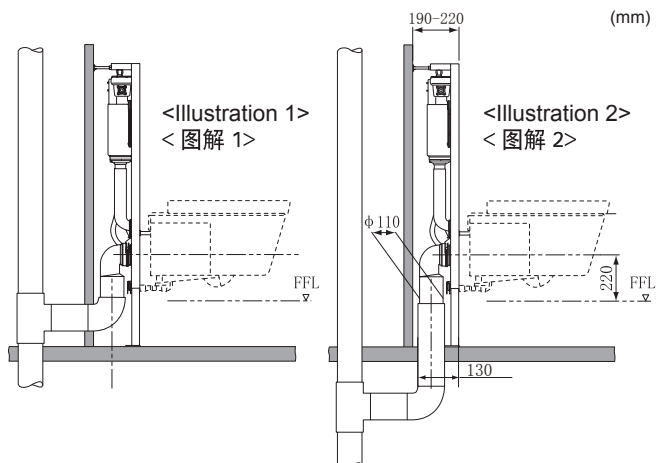
1. About the Position of Water Drain Pipe / 安装排水管

Select the installation methods shown in the illustrations 1 and 2 according to the position of sewage discharge port.

If the position of sewage discharge port does not fall under the illustrations 1 and 2, adjust the discharge position in advance.

根据下水的排出位置, 请选用图解 1 和 2 中妥当的安装方法。

图解 1 和 2 中没有妥当的下水排出位置时, 请预先调整好符合要求的排出位置。

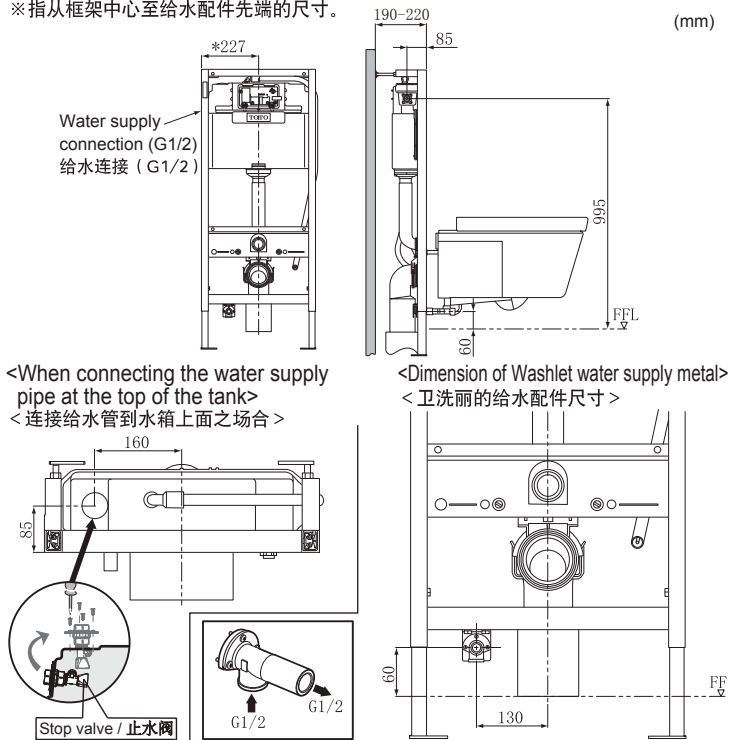


2. About the Connection of Water Supply Pipe (Water Supply to Tank / Washlet Body) / 连接给水管 (往水箱 / 卫洗丽本体给水)

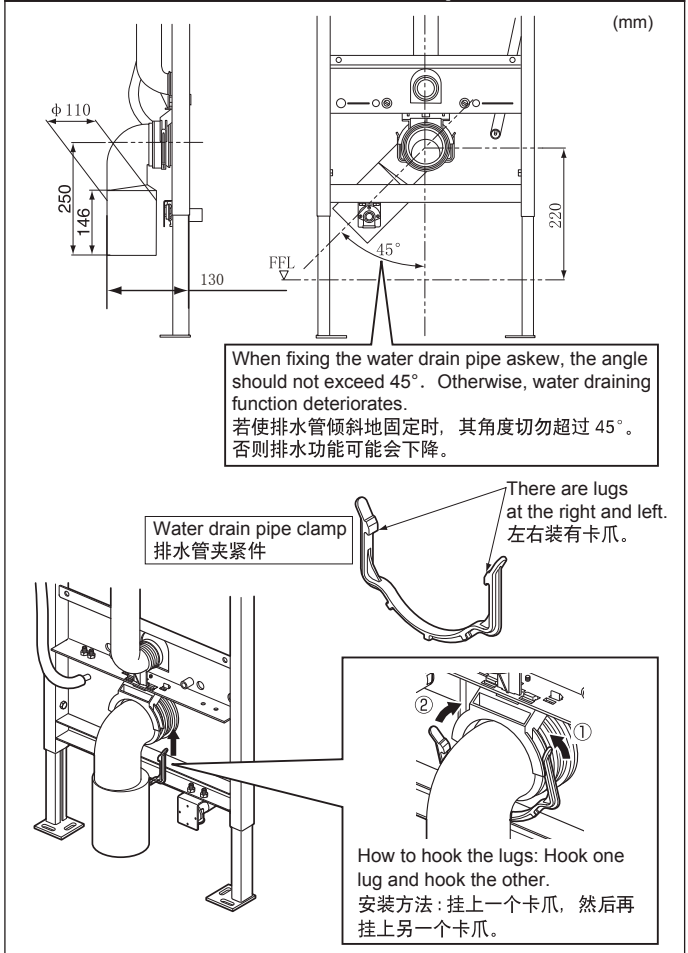
Water supply pipe connecting positions are available at the side and the top of the tank. Select the position according to the installation site.
水箱侧面与顶面有给水连接位置。根据安装现场的情况而选用。

<When connecting the water supply pipe at the side of the tank>
<连接给水管到水箱侧面之场合>

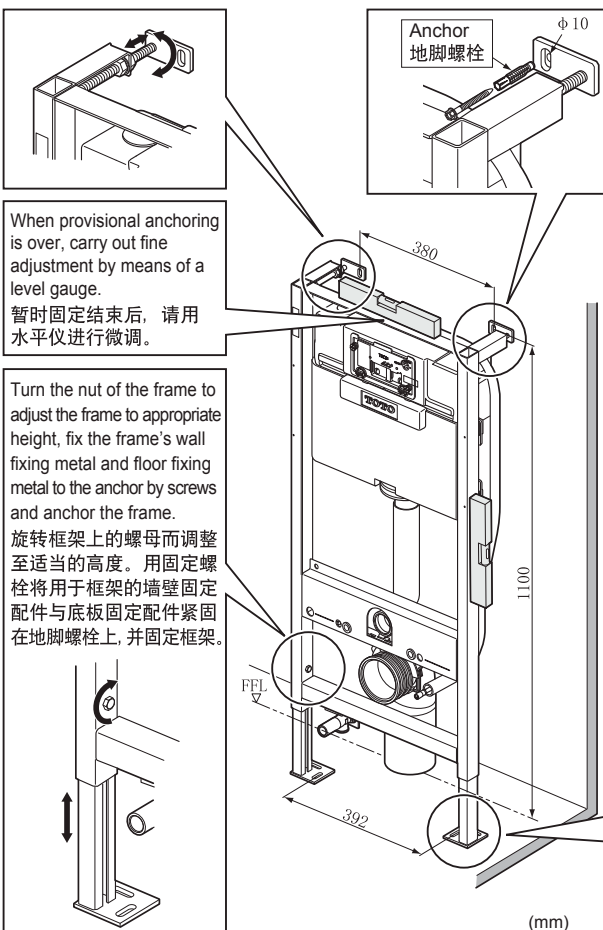
*The dimensions show those from the center of the frame to the end of the water supply metal.
※指从框架中心至给水配件先端的尺寸。



3. Connection of Water Drain Pipe / 连接排水管



4. Frame Anchoring / 固定框架

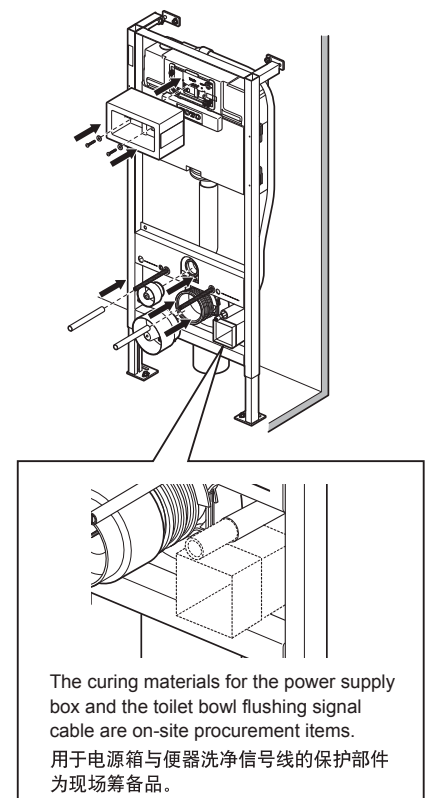


With reference to the dimensions shown in the illustration, position and mark the frame mounting holes on the wall and the floor.
Carry out the work and mount the anchor in the manner as shown in the anchor mounting illustration.
请参照图解中所示的尺寸, 决定墙壁和底板上的框架安装孔的位置并按原样尺寸划线。
按图解所示的要求安装地脚螺栓。

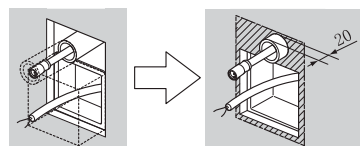
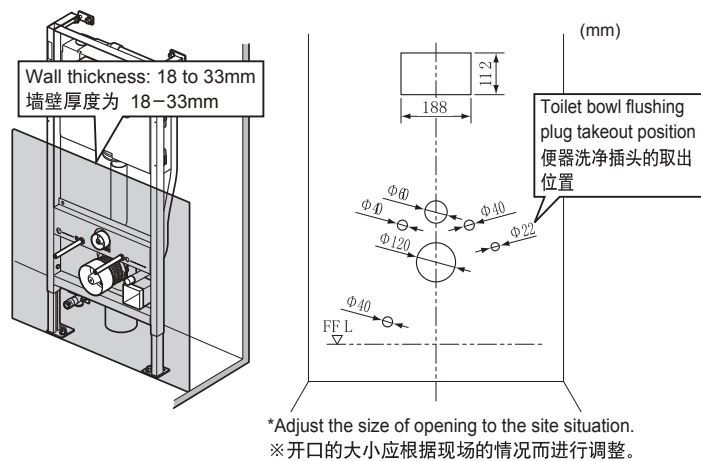
1. Drill a pilot hole (10mm dia. x 72mm depth).
1. 钻底孔 (φ 10mm × 深度 72mm)
2. Drive the anchor in.
2. 打入地脚螺栓
3. Fix the fixing metal by screw.
3. 用固定螺栓固定固定配件

Anchor / 地脚螺栓
φ 10

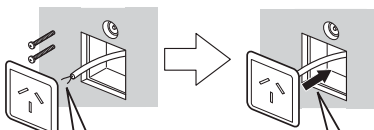
5. Mounting the Curing Material / 安装保护部件



6. Finish of Wall and Mounting the Power Supply Panel / 墙壁的精加工与电源控制面板的安装



*Fill the opening periphery completely with filler such as mortar, etc. and use care so that the box and the toilet bowl flushing cable should not come off and drop.
※在电源箱的开口四周确实地填入灰泥等的填充剂，以免电源箱与便器洗净电缆脱离掉落。

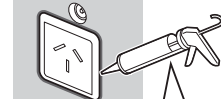


Connect the power supply panel and the power cord.
请将电源控制面板与电源线连接。

Fix the power supply panel to the power supply box.
请将电源控制面板固定在电源箱上。

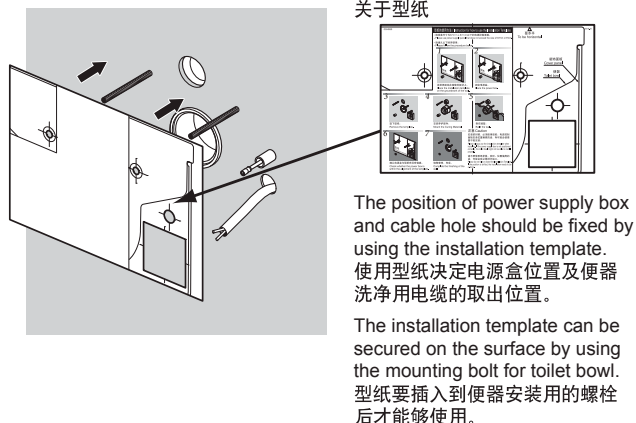
The power supply panel is on-site procurement item.
Prepare the panel having the size less than 87mm x 87mm.
电源控制面板为现场筹备品。请准备尺寸为 87mm x 87mm 以下的电源控制面板。

When using the product in the bathroom / 在浴室使用之场合

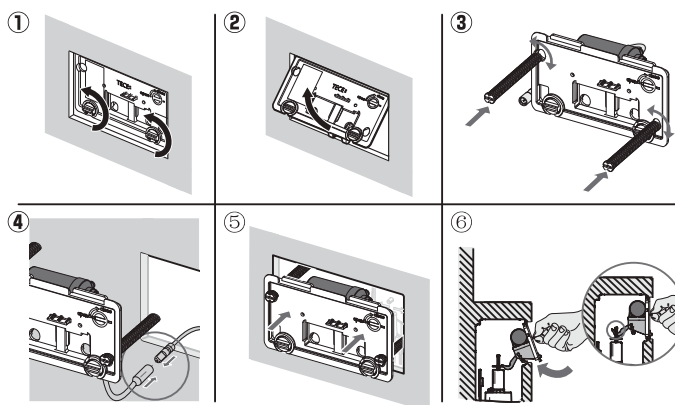


When using the product in the bathroom, be sure to caulk it.
在浴室使用时，请务必对接缝部分进行填缝处理。

About the Installation template
关于型纸

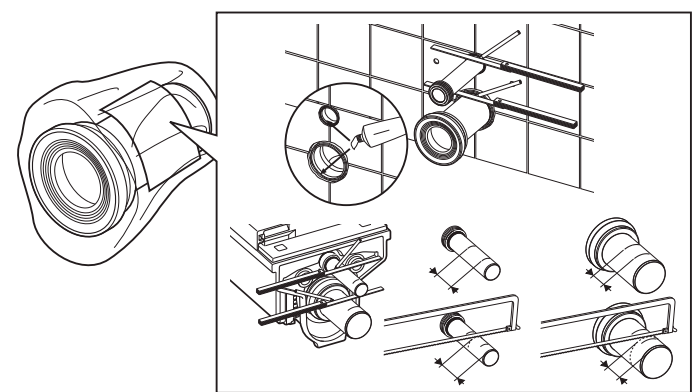


7. Mounting the Toilet Bowl Flushing Motor / 安装便器洗净马达

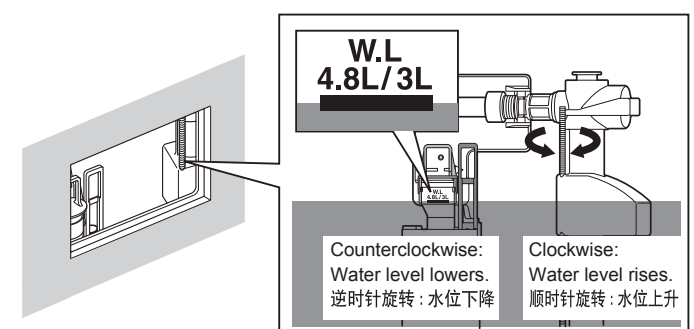


The works hereunder are guided by the exclusive installation manual.
Be sure to read the exclusive installation manual.
之后的作业步骤，请参照专用的施工说明书。请务必认真阅读专用的施工说明书

Cutting the Water Supply & Drain Pipes / 切断给排水管

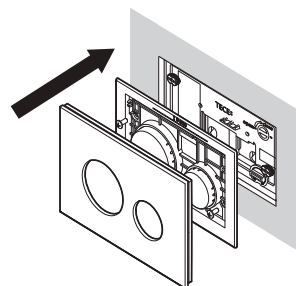


Adjusting the Water Line / 水位的调整



Turn the rod to adjust the float height. Align the water line with the line of 4.8L/3L.
旋转杠杆，以调节浮体的高度。请将水位调节到 4.8L/3L 的水线。

Installation of Flush Panel / 安装操作面板 (Flush Panel)



Information of Dealers / 询问处

For customers in China / 中国国内的客户

东陶（中国）有限公司
售后服务全国免费电话：800-820-9787
手机用户：400-820-9787

For customers in Asia and Oceania / 亚洲与大洋洲的客户

TOTO ASIA OCEANIA PTE..LTD.
10 Eunos Road 8 #12-07 Singapore Post Center Singapore 408600
Phone:+65-6744-6955 / Fax:+65-6841-0819

TOTO ASIA OCEANIA PTE..LTD.Middle East Branch
LOB19-1701-1702, jebel Ali Free Zone. P.O.box 261804.Dubai U.A.E
Phone:+971-4-886-5983 / Fax:+971-4-886-5986

TOTO ASIA OCEANIA PTE..LTD.India Branch
909-909A, 9th Floor, E-Block, International Trade Tower,
Nehru Place, New Delhi-110019, india
Phone:+91-11-4954-2421 / Fax:+91-11-4654-2430

TOTO ASIA OCEANIA PTE..LTD.Manila Representative Office
Unit 1010, 10th Floor Rufino Building Ayala Avenue cor.
V.A Rufino Street, Makati City, 1226 Philippines
Phone:+63-2-887-6643 / Fax:+63-2-887-4048